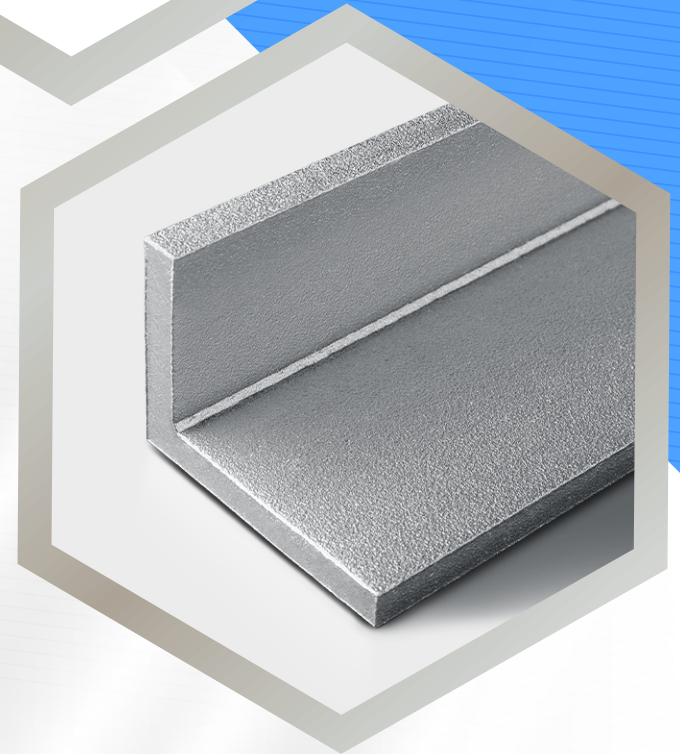


# STAINLESS STEEL ANGLES



**L-shaped sections used in structural frameworks and reinforcements.**

<b>Grades</b>	<b>:</b>	<b>Austenitic, Martensitic, Ferritic, Duplex, Precipitation Hardening(PH)</b>
<b>Standard</b>	<b>:</b>	<b>ASME, ASTM, EN, BS, GB, DIN, JIS</b>
<b>Thickness</b>	<b>:</b>	<b>3 mm ~ 10 mm</b>
<b>Width</b>	<b>:</b>	<b>20 mm ~ 150 mm</b>
<b>Finish</b>	<b>:</b>	<b>Cold Rolled/Bright Matt Polished</b>
<b>Form</b>	<b>:</b>	<b>Equal Angle, Unequal Angle.</b>