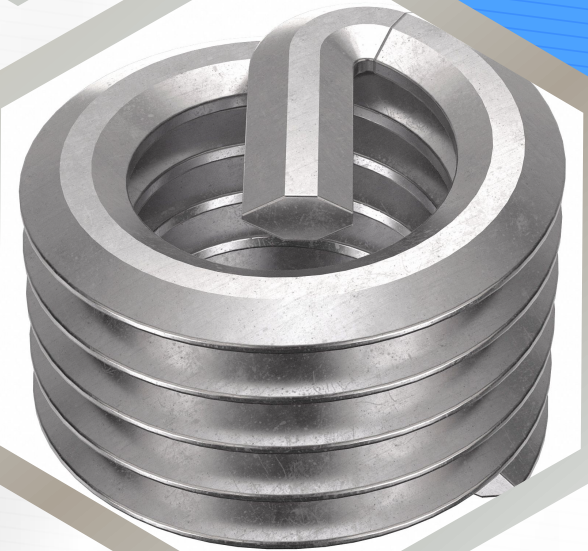


STAINLESS STEEL HELICAL SPRING LOCK WASHER



Helical Lock Washers offer strong anti-loosening performance through their split, twisted design. Fabricated in SS 304 and 316, sizes: M3 to M30. Conforms to DIN 127 and ASME B18.21.1. Common in rotating equipment, compressors and mechanical linkages where bolt loosening due to vibration must be prevented.