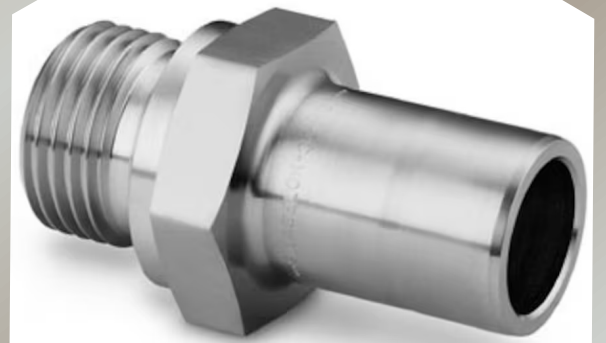




STAINLESS STEEL TUBE ADAPTER



Tube Adapters connect tubes to pipe threads, flanges or instrumentation systems. Made from SS 304/316, sizes: 1/8" to 1" OD tubing with NPT/BSP thread ends. Pressure rated to 6000 PSI. Designed as per ASTM A182 and ISO standards. Used in automation, instrumentation and lab applications for adapting tubing to standard threaded systems